

2022

Community Health Needs Assessment



2022 Community Health Needs Assessment Report Summary

Overview of Cincinnati Children’s

Cincinnati Children's Hospital Medical Center ("Cincinnati Children's") is a private, not-for-profit 501(c)(3) corporation, which owns and operates a comprehensive pediatric academic medical center located in Cincinnati, Ohio. Cincinnati Children’s includes one of the nation's largest pediatric tertiary and quaternary care facilities. During the fiscal year (FY) that ended June 30, 2021, Cincinnati Children’s had more than 1.5 million patient encounters and served patients from 65 countries, all 50 states, Washington D.C. and Puerto Rico.¹

Definition of Community Served

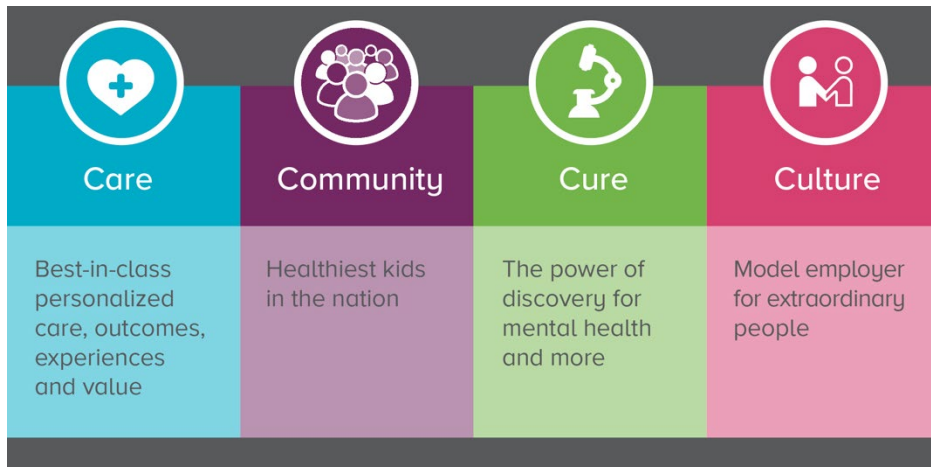
This report assesses the child community health needs of the Cincinnati Children’s Primary Service Area (PSA), which is an eight-county region in Southwestern Ohio, Northern Kentucky, and Southeastern Indiana. The PSA includes Butler, Clermont, Hamilton, and Warren Counties in Ohio; Boone, Campbell, and Kenton Counties in Kentucky; and Dearborn County in Indiana. Clermont County is classified as part of Appalachia.

Purpose of Report

The 2022 Community Health Needs Assessment (CHNA) process meaningfully and consistently connected with community members and partners to obtain an understanding of health needs experienced and prioritized by the community. The process used a population health mindset and multiple avenues of connection to create a document capable of enhancing collective efforts to equitably improve child health.

As Cincinnati Children’s approaches its 150th birthday in 2033, a thirteen-year strategic plan was adopted with the commitment to “**Pursue Our Potential Together, so all kids can pursue theirs.**” To help propel the organization forward, Cincinnati Children’s is focused on four aspirations – Care, Community, Cure, and Culture (Figure 1). The community input and feedback gathered in the CHNA will support the development of strategic initiatives and improvement strategies as part of the Pursuing Our Potential Together (POPT) strategic plan across these four aspirations.

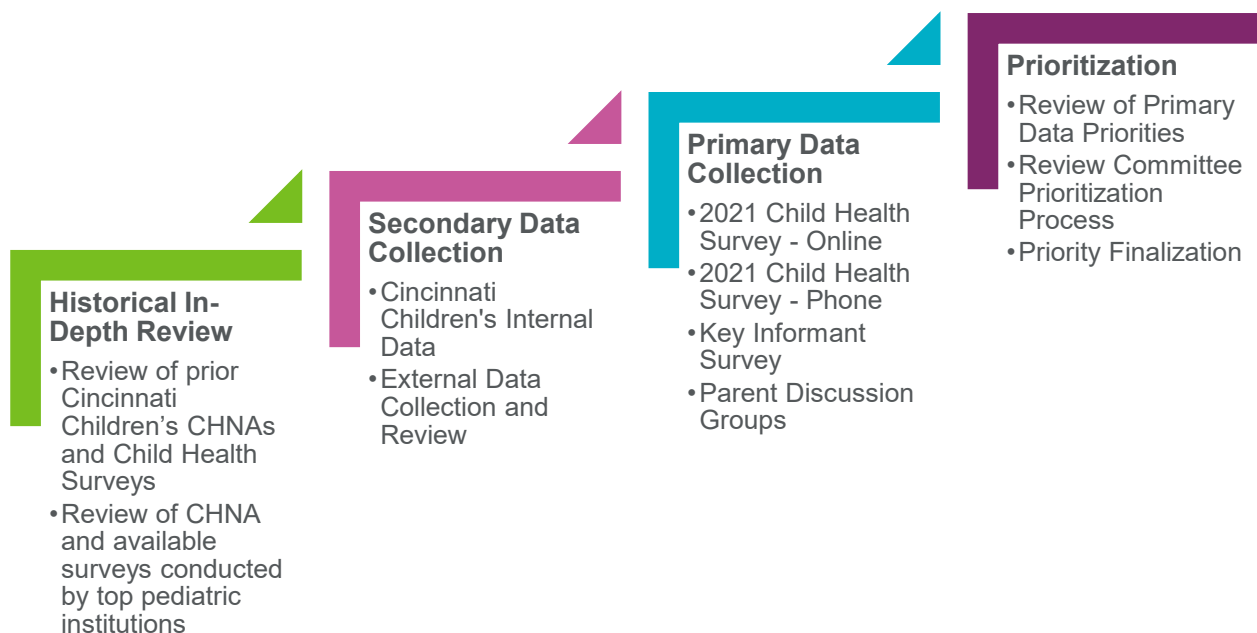
Figure 1. Four Pillars of Pursuing Our Potential Together



This report meets the requirements of the Affordable Care Act of 2010 and the IRS Section 501(r)(3) as it is currently understood and interpreted by Cincinnati Children’s management and is inclusive of Cincinnati Children’s four hospital facilities – Burnet Campus, Liberty Campus, College Hill Campus, and Linder Center of HOPE. Not-for-profit hospitals conduct a CHNA every three years and pair it with adoption of an implementation strategy to meet the community needs identified.

Methodology and Process

This section contains a high-level summary of the methodology and data collection process utilized in completing the 2022 CHNA. For additional details on methodology and results, including primary data collection, secondary data sources, and the prioritization process, please refer to the full 2022 CHNA report found on our website. (<https://www.cincinnatichildrens.org/about/community/health-needs-assessment>).



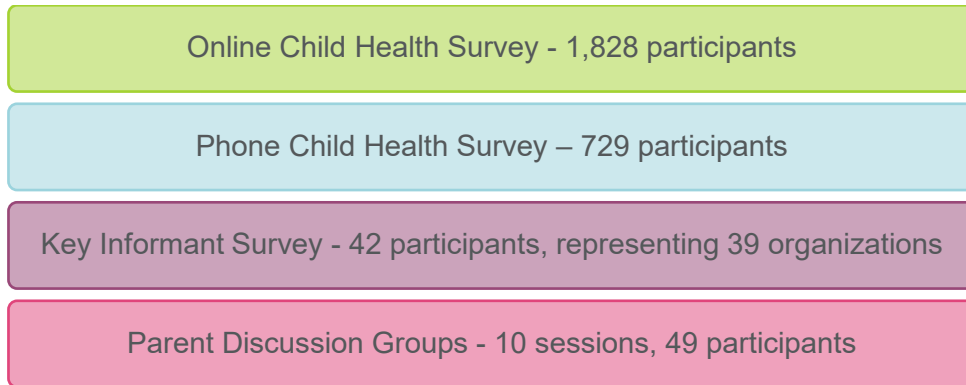
Historical In-Depth Review

To complete the 2022 CHNA, an in-depth review was conducted of prior Cincinnati Children’s CHNAs and Child Health Surveys, along with the written reports and available surveys conducted by other top pediatric institutions. Information gleaned from this review, along with the framework of Cincinnati Children’s Pursuing Our Potential Together (POPT) strategic plan, feedback from the CHNA Advisory Committee, and an emphasis on community partnership and population health, led to the creation of new primary data collection tools for the 2022 assessment.

Primary Data Collection

To understand the extent of child health needs within Cincinnati Children’s community, we utilized four primary data collection methods: an online 2021 Child Health Survey, a phone-based 2021 Child Health Survey, Key Informant Surveys, and Parent Discussion Groups. Input was solicited through Cincinnati Children’s patients and families, community members, and key child health organizations, including organizations serving vulnerable populations across the Cincinnati Children’s PSA. Figure 2 provides a breakdown of participation for each primary data collection method.

Figure 2. Primary Data Collection Methods and Participant Totals



Secondary Data Collection

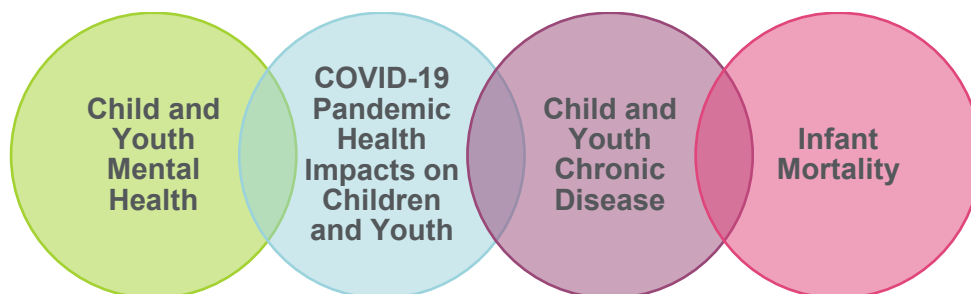
Cincinnati Children’s collected secondary data from local, state, and national sources to research child health needs and guide question development. Where possible, the most recent data was included in this report. Internal hospital data related to admissions and disease prevalence was also reviewed. The internal data was complemented by data collected from a wide range of external sources.

Prioritization Process

During the primary data collection, key Informant and 2021 Child Health Survey respondents were asked to rank the top two child health and health-related needs in their community. Once child health and health-related needs were identified from primary and secondary data sources, a prioritization committee – comprised of leaders representing primary and specialty pediatric care, social work, and Cincinnati Children’s regional locations – was assembled. The prioritization committee reviewed the ranked priorities identified during the data collection process and were asked to prioritize the health needs on a 5-point Likert scale based on six criteria. Child health-related needs were ranked in order of importance.

2022 Community Health Needs Assessment Child Health Priorities

After completing the above prioritization process, the following four child health needs were selected as the priorities for the 2022 CHNA and Implementation Strategy reports:



Strategies to address these four priorities are detailed in the accompanying 2022 Implementation Strategy report, which can be found on our website. (<https://www.cincinnatichildrens.org/about/community/health-needs-assessment>).

Other health and health-related needs identified by the community are included in the list below. These other health and health-related needs will be addressed primarily through existing and new community partnerships.



A review of the 2022 CHNA Prioritized Child Health Needs can be found in the full 2022 CHNA report on our website. (<https://www.cincinnatichildrens.org/about/community/health-needs-assessment>).

2022 Community Health Needs Assessment Approval and Adoption

The 2022 CHNA was adopted by the Board of Trustees on April 26, 2022.

This Summary Report document provides a high-level review of the purpose, methodology, and results of Cincinnati Children's 2022 CHNA. To review the entire 2022 CHNA report, please visit: <https://www.cincinnatichildrens.org/about/community/health-needs-assessment>.

To see our 2022 Implementation Strategy, please visit: <https://www.cincinnatichildrens.org/about/community/health-needs-assessment>.

Regional Community Health Needs Assessment – The Health Collaborative

The Health Collaborative (THC), a 501c3 non-profit with the mission of improving health and health care in Greater Cincinnati, leads the creation of a regional CHNA report. The regional CHNA is separate from the Cincinnati Children's CHNA described herein. While the reports, data collection, and prioritization processes are separate, THC and Cincinnati Children's retained a collaborative relationship throughout the assessment process to create complementary reports. A copy of THC's finalized regional assessment can be found here <https://healthcollab.org/community-health-needs-assessment>.

References

1. Cincinnati Children's Hospital Medical Center. Data from: Cincinnati Children's Hospital Data. 2021.