

## Reading Disorders

### What are the signs of a reading disorder?

- Family history of reading problems
- History of being a late talker
- Difficulty rhyming words
- Difficulty saying or writing the alphabet
- Difficulty remembering letter sounds
- Difficulty reading new words
- Slow, difficult reading and/or writing
- Difficulty answering questions about what was read
- Reading below grade level
- Difficulty writing ideas on paper.



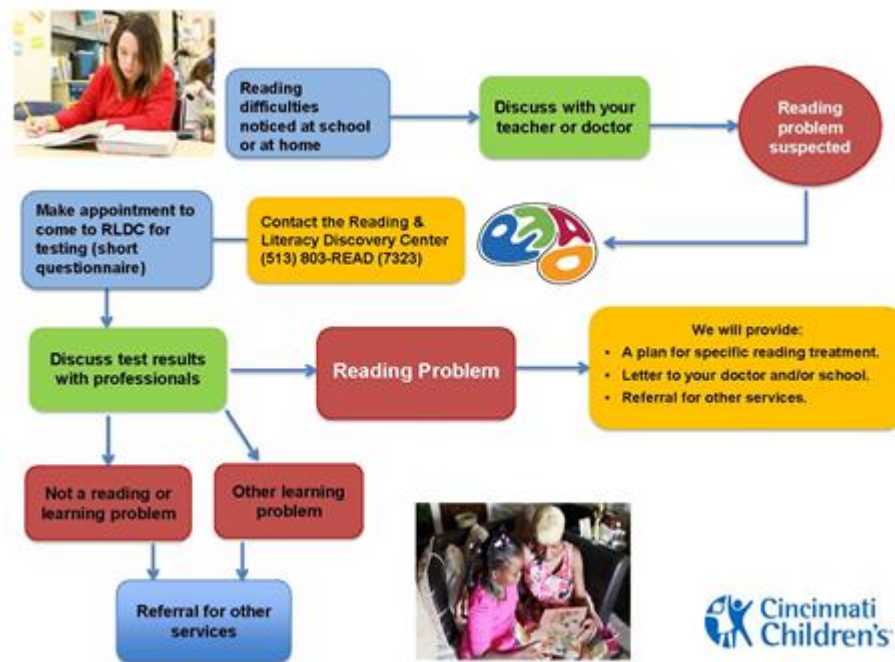
### Who diagnoses a reading disorder?

- At the Reading and Literacy Discovery Center (RLDC), a speech-language pathologist evaluates reading abilities and performs any needed testing.
- A psychologist helps with testing, including language, IQ, and reading.
- If a reading disorder is diagnosed, a referral for services will be made, along with recommendations for working with your child at home and at school..

### What is a Reading Disorder?

- It is not a hearing problem
- It is not a vision (seeing) problem
- It is not laziness or not trying hard
- It does not mean your child is not smart
- It is not an attention problem, though children with attention problems often have reading problems, especially comprehension (understanding).
- It is a difference in how your child's brain processes language and words.
- Children with reading problems can be very successful in school and life!

## Start to Finish at the Reading and Literacy Discovery Center (RLDC):



## If you worry that your child has a reading problem:

- Call us! 513-803-READ
- We can help with testing, support, and referral for services.

## Reading Resources

- The Reading and Literacy Discovery Center has information on research, evidence-based treatment, services, and events
- International Dyslexia Association (IDA): [www.interdys.org](http://www.interdys.org)
- National Center for Learning Disabilities (NCLD): [www.nclld.org](http://www.nclld.org)
- Yale Center for Dyslexia: [www.dyslexia.yale.edu](http://www.dyslexia.yale.edu)
- Information about special education law, education law, and advocacy for children with disabilities: <http://wrightslaw.com>
- Your local library

## Parent Groups:

- International Dyslexia Association (Cincinnati chapter) - [www.interdys.org](http://www.interdys.org)
- Decoding Dyslexia – [www.decodingdyslexia.net](http://www.decodingdyslexia.net) Apraxia Kids: <http://www.apraxia-kids.org/>

### **Tips for Supporting Your Child:**

- Help your child develop hobbies and interests.
- Talk positively about school.
- Celebrate your child's successes.
- Read to your child about interesting topics and invite them to participate in the story.

### **For more information, please contact the:**

Reading and Literacy Discovery Center (RLDC)  
Cincinnati Children's Hospital Medical Center

**(513) 803-READ** (513-803-7323)

3333 Burnet Ave. ML 15021

Cincinnati, OH, 45229

<https://rldc.cchmc.org/>