



Cincinnati Children's and Avondale: Partnerships and Investments

Cincinnati Children's invests \$11.5 million in Avondale Community to improve child and community health by encouraging development, strengthening local nonprofits, and supporting workforce development in Avondale.

Community Development

Cincinnati Children's Financial Commitment: \$10 million over five years. Investments may include residential housing, real estate and other community development. Cincinnati Children's will work with Uptown Consortium and other partners.



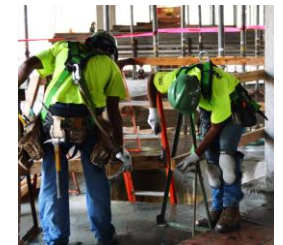
Capacity Building

Cincinnati Children's Commitment: \$1.55 million over five years. Capacity building grants for nonprofits serving Avondale Organizations advancing child and community health goals.



Workforce Development and Economic Inclusion

Maintain high standard of supplier diversity. Encourage and align workforce development efforts to help meet real ongoing job needs. Partner with others on career and workforce development efforts.



Partnership and Investment Governance and Committees

Members of governance and advisory committees includes representatives from a broad range of Avondale organizations, the city, members of the community and members of Cincinnati Children's.

Avondale Capacity Building Grants measurably improve the health of local children and reduce disparities in Avondale by creating a framework for collaboration. Grants support activities that:

- Improve effectiveness and efficiency of current programs
- Evaluate and measure and continuously improve an existing program
- Scale, maximize and further leverage current assets and resources
- Implement quality improvement to better deliver services to target population
- Strengthen leadership and governance resulting in measurable impact

Capacity Building Grantees 2016-17 Grantees and Sponsorships

Avondale Community Council (ACC)
 Avondale Comprehensive Development Corporation (ACDC)
 CWFF Child Development Center
 Easter Seals
 Every Child Succeeds
 Greater Cincinnati Urban League
 Gabriel's Place
 Hirsch Recreation center

Rockdale Academy
 South Avondale
 The Community Builders
 United Way
 Wesley Education Center for Children and Families

**RFP for 2017-18 Grants Released April 20, 2017*

Cincinnati Children's and Avondale: Partnerships and Investments

School Based Health Centers and Primary Care

School Based Health Centers
Pediatric Primary Care Clinics
Community Resource Liaison



Every Child Succeeds

Home Visitation Programs for Mothers
Family and Community Programs
Community Pantry



Diversity, Inclusion and Workforce Development

MBE, WBE, Supplier Diversity Spend
Messer-Easter Seals Collaboration
Biomedical Research Internship for Minority Students
(BRIMS) Program



Other Child Health Collaborations in Avondale

Imagination Library
School Tutoring and Mentoring
Adopt a Class



Housing Collaborations and Partnerships

Avondale Home Improvement Program
Hickory Place Townhomes



See Our Community Benefit Report Featuring:

Primary Care and Community Resources Liaison, Sickle Cell Disease, Vision Screening, Literacy and Tutoring, ADHD, Mental Health

www.cincinnatichildrens.org/about/community/community-benefit

Questions? Contact communityrelations@cchmc.org or 513 636-9327

