

Developmental Disorders

in Children 3 to 5 Years Old



FAST FACTS

1 in 6

children 3 to 17 years old
with a developmental
disability

1 in 44

children in the United States
with ASD

WHEN TO REFER

- Refer to Audiology if there are speech/language delays.
- Refer to suitable therapist (OT/PT/ speech) for assessment of area(s) of developmental delay.
- Refer to Developmental and Behavioral Pediatrics (DDBP) to evaluate for ASD and/or GDD.
- Refer to Behavioral Medicine and Clinical Psychology (BMCP) or community mental health to address frequently disruptive behavior. If diagnostic clarification of ADHD needed in very young children, <4 years old, also refer to DDBP.
- Refer to Neurology if there are motor/tone abnormalities or you suspect cerebral palsy.
- Refer to Genetics if there is concern about specific genetic disorder.

If you have urgent clinical questions about these disorders, contact the on-call Developmental and Behavioral Pediatrics (DDBP) specialist through the Physician Priority Link® 1-866-636-7997.

Developmental disorders cause physical, behavioral, learning or language impairments that lead to functional limitations in major life activities. Children with these disorders benefit from targeted educational services and supplemental community therapies.

In children 3 to 5 years old, it's important to identify autism spectrum disorder (ASD) and/or global developmental delay (GDD). Social-communication deficits and repetitive behaviors are signs of ASD, while GDD is associated with delays in two or more areas of development (motor, language, cognitive, personal-social or activities of daily living). As a child nears age 5, persistent GDD is more likely to predict a diagnosis of intellectual disability (ID).

Developmental disorders occur in all racial, ethnic, and socioeconomic groups. However, children from minoritized and low-income groups are often diagnosed later. Developmental screening/surveillance are key to timely diagnosis.

ASSESSMENT

Perform a medical, developmental and emotional/behavioral history and a physical exam. Consider behavioral measure (e.g., Vanderbilt) as clinically indicated.

HPE (HISTORY AND PHYSICAL EXAM) RED FLAGS

- Any parent/caregiver or early childhood professional concerns.
- Previous referral to (or engagement with) Early Intervention services, or current receipt of special education services such as an individualized education program (IEP).
- Frequent or intense tantrums, especially with harm to self or others.
- Risk factors including family history of ASD, ID or other learning issues; perinatal complications such as prematurity or substance exposure; congenital neurologic disorders or heart disease; genetic or chronic conditions; adverse childhood events.
- Autism-specific red flags: unusual or limited interest in social interactions; communication difficulties; unusual or obsessive interests and rituals; limited pretend play; repetitive behaviors or speech patterns (e.g., echolalia or scripting).

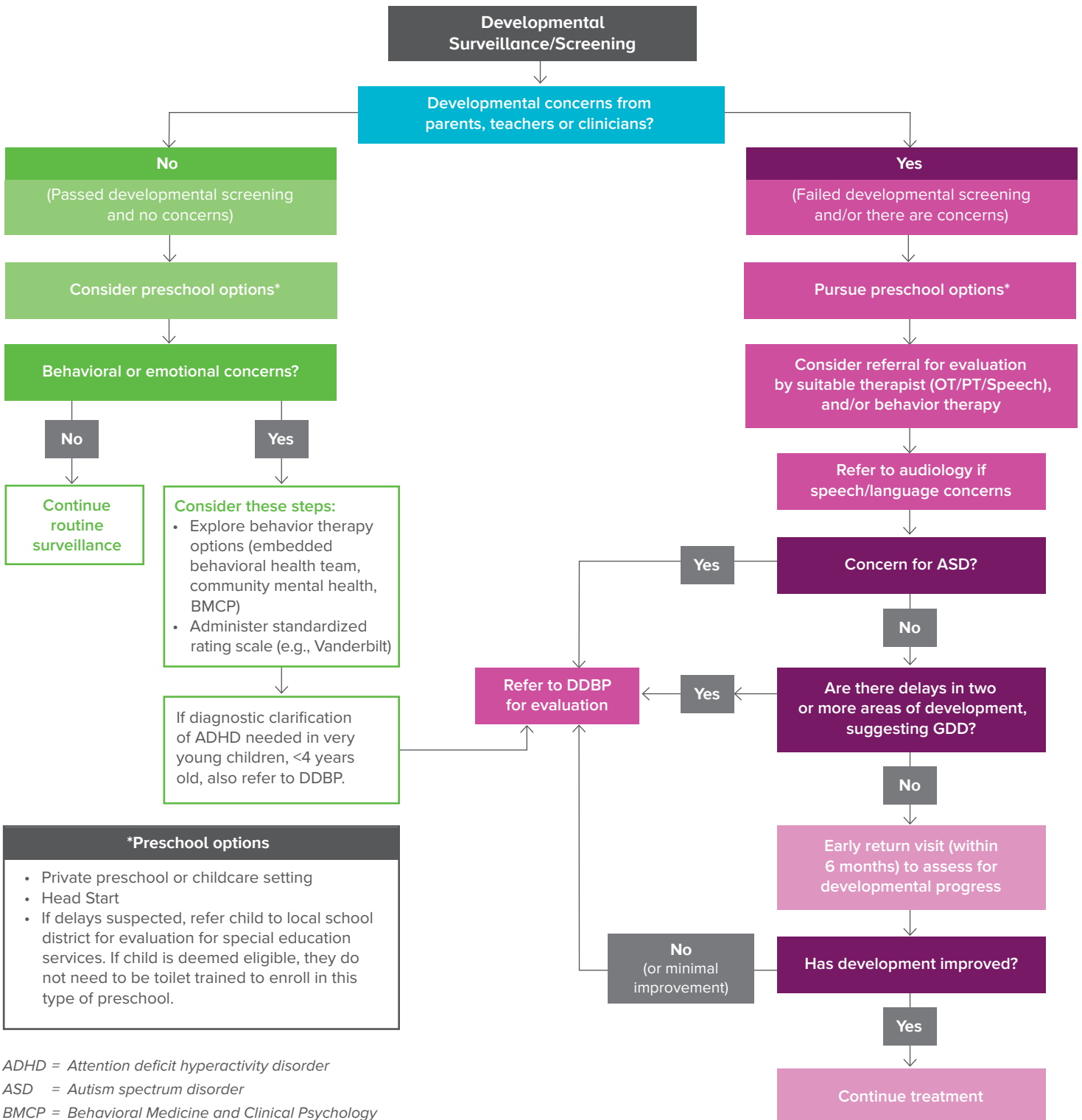
MANAGEMENT/TREATMENT OF DEVELOPMENTAL DISORDERS

- Order hearing and vision evaluation.
- Review growth (including head circumference) and newborn metabolic screening.
- Consider brain MRI for motor/tone issues; check CK and TSH if there is gross motor delay/hypotonia.
- Encourage participation in structured preschool programming (see reverse).
- Encourage participation in parent education programs specific to children with developmental disorders.

If you would like additional copies of this tool, or would like more information, please contact the Physician Outreach and Engagement team at Cincinnati Children's.

Developmental Disorders

in Children 3 to 5 Years Old



***Preschool options**

- Private preschool or childcare setting
- Head Start
- If delays suspected, refer child to local school district for evaluation for special education services. If child is deemed eligible, they do not need to be toilet trained to enroll in this type of preschool.

ADHD = Attention deficit hyperactivity disorder
 ASD = Autism spectrum disorder
 BMCP = Behavioral Medicine and Clinical Psychology
 DDBP = Developmental and Behavioral Pediatrics
 GDD = Global developmental delay

For urgent issues, or to speak with the specialist on call 24/7, call the Physician Priority Link® at 1-888-636-7997.